

Report of the Director of Environment and Neighbourhoods

Outer North West Area Committee

Date: 8th November 2010

Subject: Annual Community Safety Report

<p>Electoral Wards Affected:</p> <p>Adel & Wharfedale Guiseley & Rawdon Horsforth Otley & Yeadon</p> <p><input type="checkbox"/> Ward Members consulted (referred to in report)</p>		<p>Specific Implications For:</p> <p>Equality and Diversity <input type="checkbox"/></p> <p>Community Cohesion <input type="checkbox"/></p> <p>Narrowing the Gap <input type="checkbox"/></p>	
<p>Council Function <input checked="" type="checkbox"/></p>	<p>Delegated Executive Function available for Call In <input type="checkbox"/></p>	<p>Delegated Executive Function not available for Call In Details set out in the report <input type="checkbox"/></p>	

Executive Summary

This report provides details of crime statistics during the period April 2005 to March 2010, and highlight key activities during this period.

1.0 Purpose of this Report

- .1 This report is the annual community safety update report, providing details about Community Safety activity during the last 12 months and looking at crime trends between April 2005 and March 2010.

2.0 Background Information

2.1 It should be noted that a number of factors have a bearing on crime; these can be placed in 3 broad categories.

- A suitable target or opportunity with high value items which can be removed relatively easily, vulnerable premises or people, unlocked doors or windows, etc
- A motivated offender, someone whose values or beliefs make stealing / violence acceptable, drug dependency, someone motivated by greed, etc
- A low likelihood of getting caught with no police or security patrols, a neighbourhood with a culture of low reporting of crime, no natural street surveillance, properties obscured by overgrown bushes, etc

2.2 Traditional problem solving techniques aim to reduce crime by impacting on these 3 categories;

- working to educate the victim (leaflets, crime reduction advice, etc)
- tackle the offender (known as offender management - Cautions, Criminal Sanctions, tenancy enforcement, disruption visits, etc)
- undertake environmental works (cut back hedges, fit additional locks, alleygates, etc)

2.3 However, it should be acknowledged that other factors also have a bearing on crime:

- Season
- Weather
- Release of offenders
- Location
- Population

2.4 It is also important to note that one offender can commit many offences in a short period of time and this can lead to significant increases in the figures. For example, where cars are damaged along a whole street there maybe 6 cars damaged and this would lead to 6 reports of criminal damage.

2.0 Summary of Key Actions

Community Safety work across the Division to tackle Crime and anti social behaviour is managed through the Divisional Community Safety Partnership chaired by the Police and Area Management and includes partners from West North West Homes, Safer Leeds, Fire Service, Extended Service, Youth Service, the University and lead Community Safety Members from each of the four Area Committees in West North West Leeds. The group meets four times a year and sets the strategic direction for the Division examining performance and agreeing priorities. The group also works with the Safer Leeds Executive to feed into the Community Safety Strategy.

The following key actions have been delivered through the Divisional Community Safety Partnership during the last 12 months to tackle crime and anti social behaviour in Outer North West Leeds.

2.1 Operation Champion

This is a multi agency operation aimed at tackling crime, asb and environmental issues within an agreed area. A number of agencies come together to focus their activity in this area, joining together to have a greater impact. During the last 12 months, 2 Operation Champions have been held in the Outer area focusing on Holt Park (December 2009) and June (August 2010). A further 2 Operation Champions are scheduled during the next 12 months (December 2010 and June 2011). These operations will be supplemented by action days as required. During this period action days were held in Otley and Yeadon

2.2 Designated Public Places Orders (DPPOs)

Four Designated Public Places Orders are currently in Place in Horsforth, Guisley, Yeadon and Otley. A Designated Public Places Order provides the Police with additional powers to confiscate alcohol within a defined area. Where an order exists the Police have the powers to confiscate alcohol that is being consumed or that is thought likely to be consumed (unopened bottles / cans). Failure to comply with a Police request in this regard could lead to a fine or arrest.

2.3 Multi Agency Tasking

This group meets monthly and it's membership includes; Area Management (Co-chair), Police (Co-chair), Safer Leeds, West North West Homes, Youth service, Attendance Management, Environmental Action Team, both Universities and the ASB Unit. The group aims to direct agency resources to tackle the priorities set by the Divisional Partnership and from local agency intelligence.

Examples of the work undertaken by the Multi Agency Tasking group during the period September 2009 – August 2010 includes:

- Planning and delivering Operation Champions and action days to tackle specific problems.
- Tackling anti social behaviour problems at Otley library, Broadwalks in Otley, Holtdale Lawn, King Georges, to name a few.
- training of housing staff on spotting cannabis farms
- planning and contributing to 12 months of community engagements events held in across Outer North West. Partners used these events to engage with residents about crime, grime and anti social behaviour priorities and work being undertaken in communities.

2.4 Environmental Visual Audits

During the last 12 months environmental audits were held in Horsforth, Otley and Holt Park. This initiative included partner agencies taking to the streets, with residents, to identify things which will impact on crime, this can include reporting broken street lights, getting rubbish and masonry removed from the streets, speaking to residents about items in gardens which maybe used to commit crime (masonry, ladders, unsecured bins, etc) and checking the security of homes and vehicles through observation of open windows / doors or trying doors. Where a house or vehicle is found to be insecure then Officers will speak to the occupants / owners and provide

advice on ways to reduce crime. Each Operation Champion and action day is preceded by an environmental visual audit.

2.5 Off Road Motor Cycles

The deployment and cost of these vehicles is shared equally amongst the four West North West Area Committees (£4,500 per Area Committee over 3 years). The off-road motor cycles are deployed across the division to green spaces or to target specific problems with off-road motorbikes. The vehicles are effective in reducing asb and low level crime particularly on green spaces and providing reassurance to those using parks and green spaces. The vehicles have also been used during specific initiatives such as Operation Champion or more focused initiatives in conjunction with the Council's Park Ranger Service. A single point of contact (0113 2395092) was created for calls about nuisance bikes and this "hotline" is publicised in community newsletters and on the NPT website.

The service was established in 2006 and since that time 323 vehicles have been seized by the off road team and 367 Section 59 warnings have been issued for asb caused by motorbikes. During the last 12 months, the off road team has, arrested 16 offenders, seized 66 vehicles, issued 69 Section 59 warnings and issued 72 verbal warnings.

Patrol time for the bikes is distributed evenly across each ward area and this is based on calls received and any intelligence gleaned from the calls will direct where this time is spent. Specific work in Outer North West has included patrols to the Woods surrounding Tile Lane (Adel), woods near the Parklands area (Bramhope), woods near the rear of Netherfield Road (Guiseley), Gill Lane / Esholt Park (Yeadon), Otley Shevin and Golden Acre Park.

2.6 CASAC Target Hardening

This initiative is delivered across all of Leeds and provides free security assessments for properties leading to possible recommendations for additional door locks, window locks, spy holes, chains and general crime prevention advice to householders. The Police help target this service to areas where burglary is an issue. Members of the Public can also directly refer to CASAC and pay for any work required.

During the period August 2009 – July 2010:

372 jobs were delivered in Outer North West Leeds

- 167 of these jobs were part of the project funded through the Outer North West Area Committee
- 24 sanctuary installations allowed victims of domestic violence to stay in their homes, funded through Leeds City Council's Strategic Landlord
- 86 jobs were for the standard target hardening package funded by neighbourhood renewal fund, Home Office Safer Homes Fund and single sources of temporary funding such as Victim Support.
- 95 jobs were paid for by the resident

The Outer North West Area Committee funded £60,000 worth of target hardening during the period 2008 – 2010, which resulted in a total of 418 target hardening packages. The project was extended into 2010 as other funding streams were available in 2009, which were utilised first.

2.7 CCTV

The area committee funded the permanent citing of several CCTV cameras in Outer North West. The cameras are sited in Otley and Yeadon Town centres and are monitored by LeedsWatch based within Safer Leeds. There are additional cameras in Horsforth.

2.8 Police and Community Together (PACT)

The Police have set up a number of Police and Community Together meetings to work with the community to address key concerns and issues. These meetings are held on a monthly basis within local communities. There are 9 meetings held across the Inner North West Area. Further details are available at the NPT website: <http://www.westyorkshire.police.uk/npt/>.

2.9 Revizit Programme

The Revizit programme is a 10 week initiative targeted at young people aged 12-18, involved in or at risk of being involved in crime or anti social behaviour. The program is lead by Youth Service, with input from partners such as the Police, Youth Offending Service and Extended Services. The program has been delivered in Holt Park, Yeadon and Otley.

The program content can vary depending on the group. This program challenged young peoples attitudes and behaviour towards anti social behaviour with discussions, presentations meeting ex offenders and group work sessions focusing on image & perceptions, risks of certain behaviour, the potential consequences, positive opportunities including taking part in a local sports event focusing on fair play and participation, local police priorities and why and how to keep safe. Group work sessions are mixed with fun usually physical activities that appeal to the group. Young people have to attend sessions to take part in the latter element. Throughout this process staff deliver from a youth work perspective and challenge unacceptable behaviour and attitudes.

2.10 Capture Cars

This project has been funded by the Area Committee and included a capture car which use high tech equipment to track and trace stolen property. The capture initiative has had success leading to offenders pleading guilty earlier because of the weight of evidence against them and valuable intelligence gained about where stolen goods are taken. There have been 52 capture car deployments during the period September 2009 – June 2010.

The team continues to appraise new technology with a view to ensuring that the Division makes the best use of technology to assist in reducing crime and anti social behaviour. Other Divisions in Leeds and across the West Yorkshire Force are now looking at this work and seeking to emulate the work done.

2.11 Operation Horsforth

In August 2009 the Neighbourhood Policing Team conducted a reassurance mapping exercise in Horsforth. This highlighted a number of issues of concern to residents, which lead the Police and Area Management to focus partnership work in Horsforth to address these concerns. A multi agency plan was developed to focus attention on the areas highlighted for concern. In addition, the project has undertaken 2 community engagement events, involving Police, Fire Service, West North West Homes, ASB Unit and the Youth Service amongst others, to ensure concerns and issues are addressed. Work has been undertaken through action days held in December and March and an Operation Champion held in June 2010. The work undertaken has included an environmental visual audit with residents attending in December 2009 and June 2010 to highlight environmental issues and concerns. The project came to an end in June 2010 with a further community engagement event. The project is currently being evaluated but anecdotal information suggests that crime and anti social behaviour reduced during the life of the project.

2.12 Week of Action

A week of action was held in May / June 2010, focusing on crime prevention advice. Work during the week included addressing car crime at retail parks, providing windscreen cleaning cloths for sat nav marks and reminding drivers to ensure valuables are out of sight. Purse chains were distributed at supermarkets and town centres. During the latter part of the week, property marking was undertaken in Horsforth.

2.13 Test Purchasing

The test purchasing project has been developed by West Yorkshire Police to compliment the test purchasing undertaken by Trading Standards. Upto September 2010, the project had undertaken 8 test purchasing operations, with 178 visits in total, it is important to note that some premises are re-visited, particularly if they have failed previous test purchases. During the life of the project 16 premises failed and sold to underage people.

The project has now evolved to include visits to licensed premises, through alcohol fuelled anti social behaviour operations. 13 alcohol fuelled anti social behaviour operations have been held to date. These operations involve visits to licensed premises and targeted patrols to asb hotspots where alcohol was deemed a significant factor in the asb. This included targeted patrols to recreational spaces, abandoned garages and patrolling to enforce the Designated Public Places orders.

2.14 Speed Indication Devices

In November 2009, the Outer North West Area Committee approved funding for a Speed Indication Device to be purchased by the Police and deployed in conjunction with community groups to areas of perceived speeding. The speed indication device is deployed and the speed limit for the road set into the system, which then shows a smiley face for driving within the speed limited and a frown for cars over the speed limit. The SID is deployed in all wards on a regular basis. To date the project has resulted in 2,216 letters sent to drivers advising that they have been observed driving over the speed limit and advising them to slow down. Where a stretch of road persistently identifies cars speeding, these are passed to traffic enforcement for patrols to enforce the speed limit, 31 drivers were issued with fixed penalty notices on roads passed to the traffic enforcement team.

2.15 Neighbourhood Community Safety Plans

A neighbourhood community safety plan has been developed for Otley. The plan helps to co-ordinate the work of the Council, Police and other partners to reduce and prevent crime and anti social behaviour through work with offenders, educating and advising victims and making improvements to the built environment. The plan will be monitored via the Multi Agency tasking Group and focuses on victims, offenders and locations bringing together relevant partners to deliver actions to reduce crime and anti social behaviour. The plan will run until August 2011.

3.0 Overview of crime figures

- 3.1 Appendix 1 shows a downward trend for all crimes in the 4 Outer North West Wards; Adel & Wharfedale, Guiseley & Rawdon, Horsforth and Otley & Yeadon. The crimes presented in these figures cover the period April 2005 – March 2010 and relate to all crimes including; fraud & Forgery, handling stolen goods, sexual offences and other thefts.
- 3.2 Crime reduced by 11% with 527 fewer recorded incidents during this period. The biggest gains were achieved in Adel & Wharfedale ward (25% reduction). It is important to note that these figures include all crime as mentioned above. During this period crime in Horsfroth increased slightly by 1% (13 more offences).

4.0 Overview of Crime Types

4.1 The subsequent tables will focus specifically on the following crime types: burglary, robbery, theft of and theft from vehicles, criminal damage and violent crime.

4.2 Appendix 2 provides an overview of specific crime types. Theft of motor vehicle achieved a significant reduction during this reporting period, 37% reduction. Robbery also reduced, but it should be noted that the number of crimes in this category are relatively low. Criminal Damage increased during this period, with 182 more offences, an increase of 29%. The following paragraphs will examine these trends in more detail.

4.3 Burglary and Robbery

Leeds experienced a significant increase in burglary in during the latter half of 2009. A Burglary Task Group chaired by Safer Leeds was set up to tackle the problem, and this has lead to burglary levels subsiding across Leeds due to the work of this group. However, whilst the majority of Leeds experienced an increase, Outer North West Leeds bucked this trend, with burglary decreasing by 41%, however, it should be noted that burglary did increase in 2008/09. This decrease can be attributed to a number of factors including target hardening work undertaken by CASAC (funded by an Area Committee grant), Operation Champion and action days focused on specific hotspot areas and locations, including the week of action earlier in this year which included property marking in Horsforth, using the items funded by the community safety small grant and more conventional work delivered by partners including the Revizit program.

4.4 The greatest challenge in relation to burglary is people leaving windows and doors unlocked and in some cases open whilst they are out. Nationally 1 in 4 burglaries (25%) occur using this method, however, in North West Division 40% of burglaries are committed because a door or window has been left unlocked or open. In some areas this figures rises to 60%. Quite simply, burglary across North West Division would reduce by 40% if people locked doors and windows both whilst they were in the house and when they went out. Considerable effort goes in to delivering this key message, through discussions, leaflets and PCSOs trying doors and walking into properties to advise on crime prevention. Similarly, The greatest challenge in relation to robbery is people openly carrying laptops, mobile phones or other expensive small gadgets in plain sight and having no regard for personal safety.

4.5 Theft of and Theft from Motor Vehicles

Appendix 4 shows that Theft Of motor vehicle has achieved significant reductions during this period, 37% with over 97 fewer reported incidents during this period. Theft from motor vehicles reduced by 7% with 25 fewer incidents.

4.6 Various tactics are used to help get the message about not leaving valuables on display across, examples include: If a PCSO comes across a vehicles where an item is on show they will note the details and arrange for the DVLA to write to the owner and provide some basic crime prevention advice. Temporary notices are also used in the form of the A4 poster frames purchased through well being in 2005/06. These are placed at vehicle crime hotspots to help reinforce the message.

4.7 Criminal Damage and Violent Crime

During the period of this report recorded violent crime decreased with 79 fewer offences, a decrease of 13% (Appendix 5). Criminal damage increased during this period, with 182 more offences (29%).

4.8 Both criminal damage and violent crime remain challenging areas, particularly in parts of the Outer North West where there is an active night-time economy. The Area Committee recently funded the test purchasing programme, which has assisted in reducing alcohol related violent crime. More recently, 13 alcohol fuelled asb operations have been held in Outer North West and this has included targeted patrols of town centres to tackle the issue of criminal damage, violence and alcohol fuelled anti social behaviour. Good working relationships have been established with all the pubwatches in Outer North West and this is used to promote responsible management of licensed premises.

5.0 **Ward Summary**

5.1 Adel & Wharfedale

During this period, substantial reductions were achieved in violent crime (49%), burglary (41%) and Theft from motor vehicles (23%), Appendix 6. Robbery has increased by 13 offences, which is a 65% decrease, however it should be noted that the numbers are very low. Criminal damage has increased by 46 offences, an increase of 38%. However, overall the table shows that crime (in the categories mentioned earlier) has reduced by 25% with 157 fewer offences.

5.2 Guiseley & Rawdon

Appendix 7 shows that burglary, theft from motor vehicle and criminal damage reduced by 22%, 21% and 24%, respectively. Theft of motor vehicle reduced by 53%, however, there are relatively low numbers in this category. Criminal damage has increased by 42 offences (33%) and robbery increased by 100%, however this increase was 5 offences increasing to 10. Overall crime amongst these offences has reduced by 44 offences (24%).

5.3 Horsforth

Violent crime and theft of motor vehicle reduced by 58% and 48% respectively (Appendix 8). Criminal damage did increase during this period with 86 more offences an increase (62%). Burglary also increased with 17 more offences, an increase of 11%. Overall, crime in Horsforth reduced by 61 offences a reduction of 9%.

5.4 Otley & Yeadon

Appendix 9 shows that criminal damage reduced by 51% which equates to 122 fewer offences. Theft of motor vehicle and violent crime also reduced (28% and 27%, respectively). Theft from motor vehicle and burglary increased during this period by 31% (31 more offences) and 14% (14 more offences). Otley will be the focus for a neighbourhood community safety plan over the next 12 months, which will address the issues raised from these crime figures.

6.0 **Conclusion**

- 6.1 Leeds has seen a sharp rise in burglary during the last 4 months of 2009 (September – December). Whilst this has subsided due to the additional work undertaken across the city, additional work is required to sustain these decreases and continue the downward trend. The neighbourhood community safety plans offer an excellent opportunity to co-ordinate multi agency activity to achieve these aims. It is also important to remember that the overview for the whole of the Outer North West area shows all crimes have experienced a decrease during this period.

7.0 **Recommendations**

- 7.1 The Area Committee is asked to note the contents of the report and offer comments.

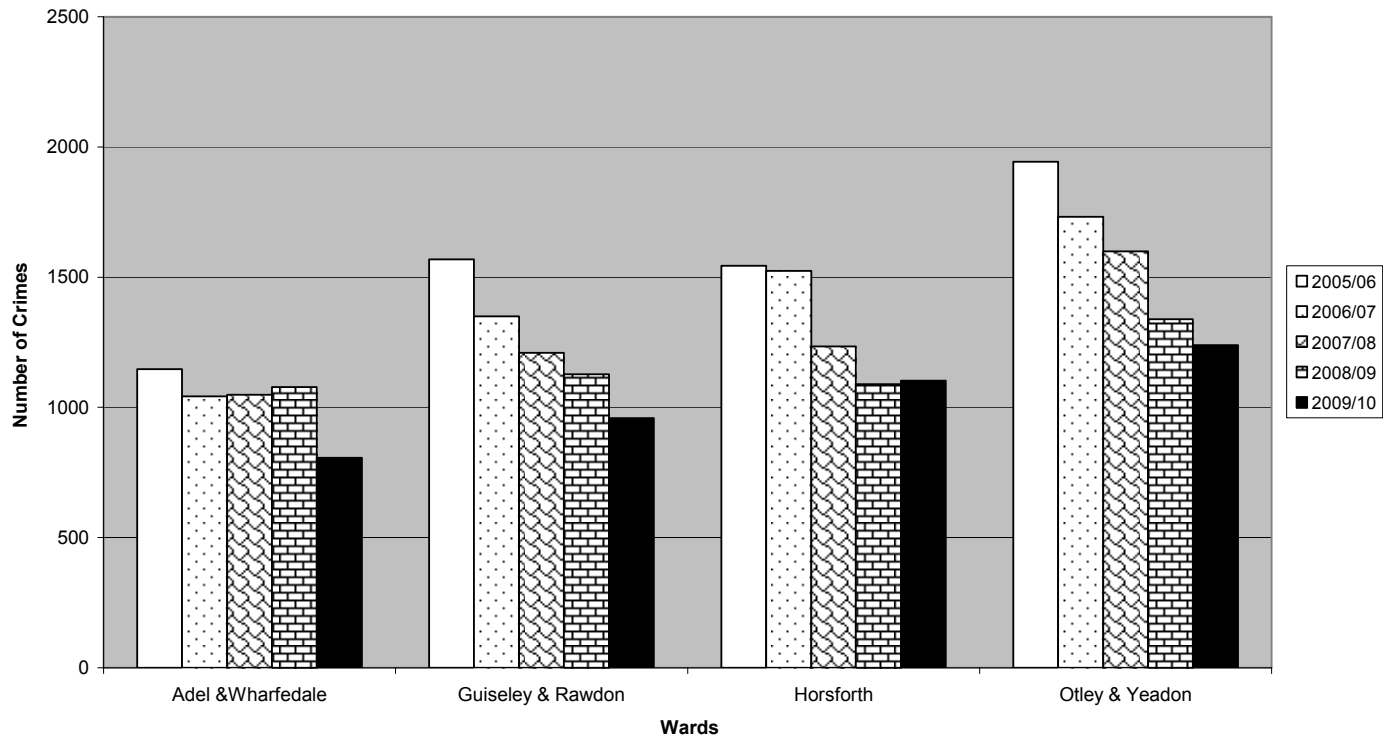
List of background documents:

None

Ward Over

Ward Overview	Years					Variation	
Ward	2005/06	2006/07	2007/08	2008/09	2009/10	Difference	Reduction
Adel & Wharfedale	1147	1042	1048	1077	806	271	25%
Guiseley & Rawdon	1568	1349	1209	1127	958	169	15%
Horsforth	1543	1524	1234	1089	1102	-13	-1%
Otley & Yeadon	1943	1732	1599	1339	1239	100	7%

Ward Overview

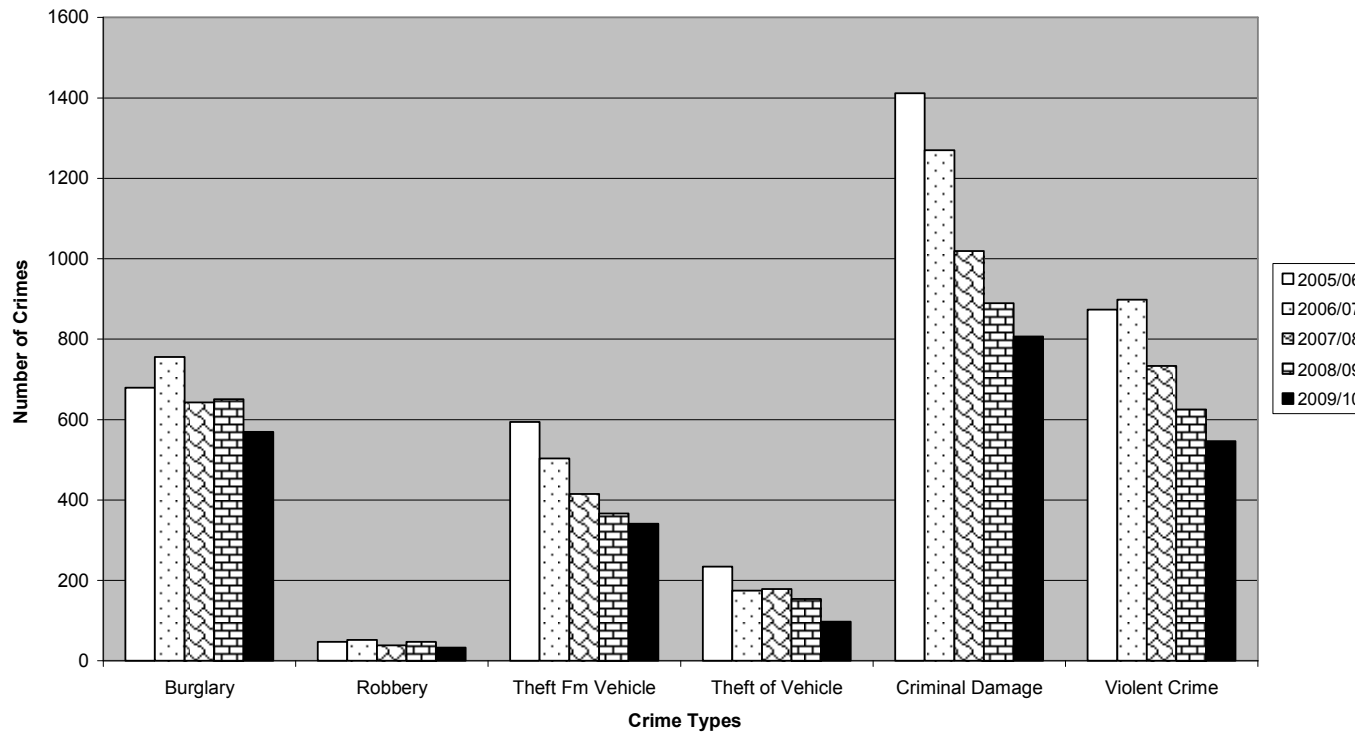


Appendix 2

Overview of Crime Types

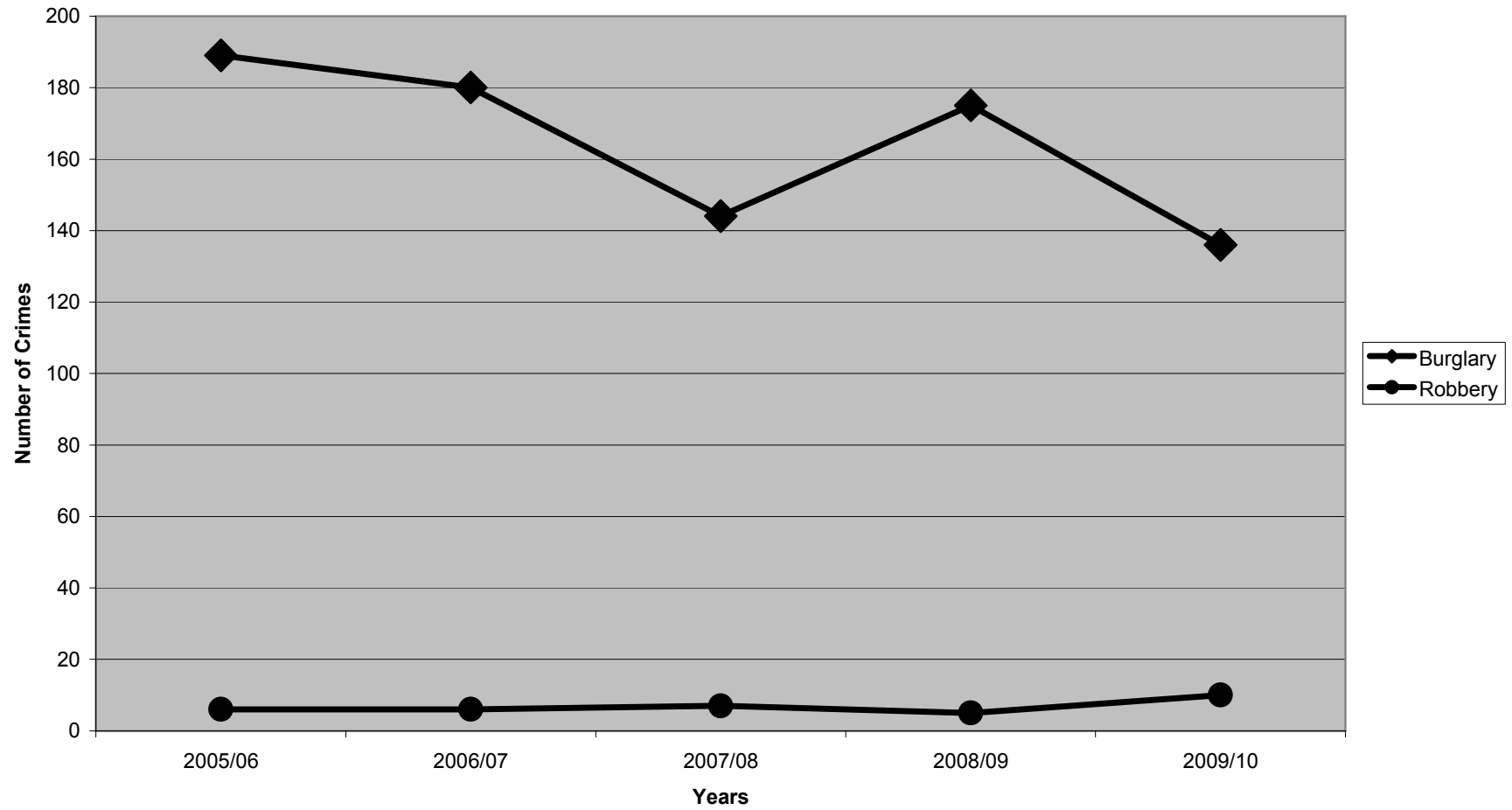
Crime Overview	Years					Variation	
Crime Types	2005/06	2006/07	2007/08	2008/09	2009/10	Difference	Reduction
Burglary	679	756	643	650	569	81	12%
Robbery	47	52	38	47	33	14	30%
Theft Fm Vehicle	594	503	415	366	341	25	7%
Theft of Vehicle	234	175	179	154	97	57	37%
Criminal Damage	1411	1270	1019	625	807	-182	-29%
Violent Crime	873	898	733	889	546	343	39%

Overview of Crime Types

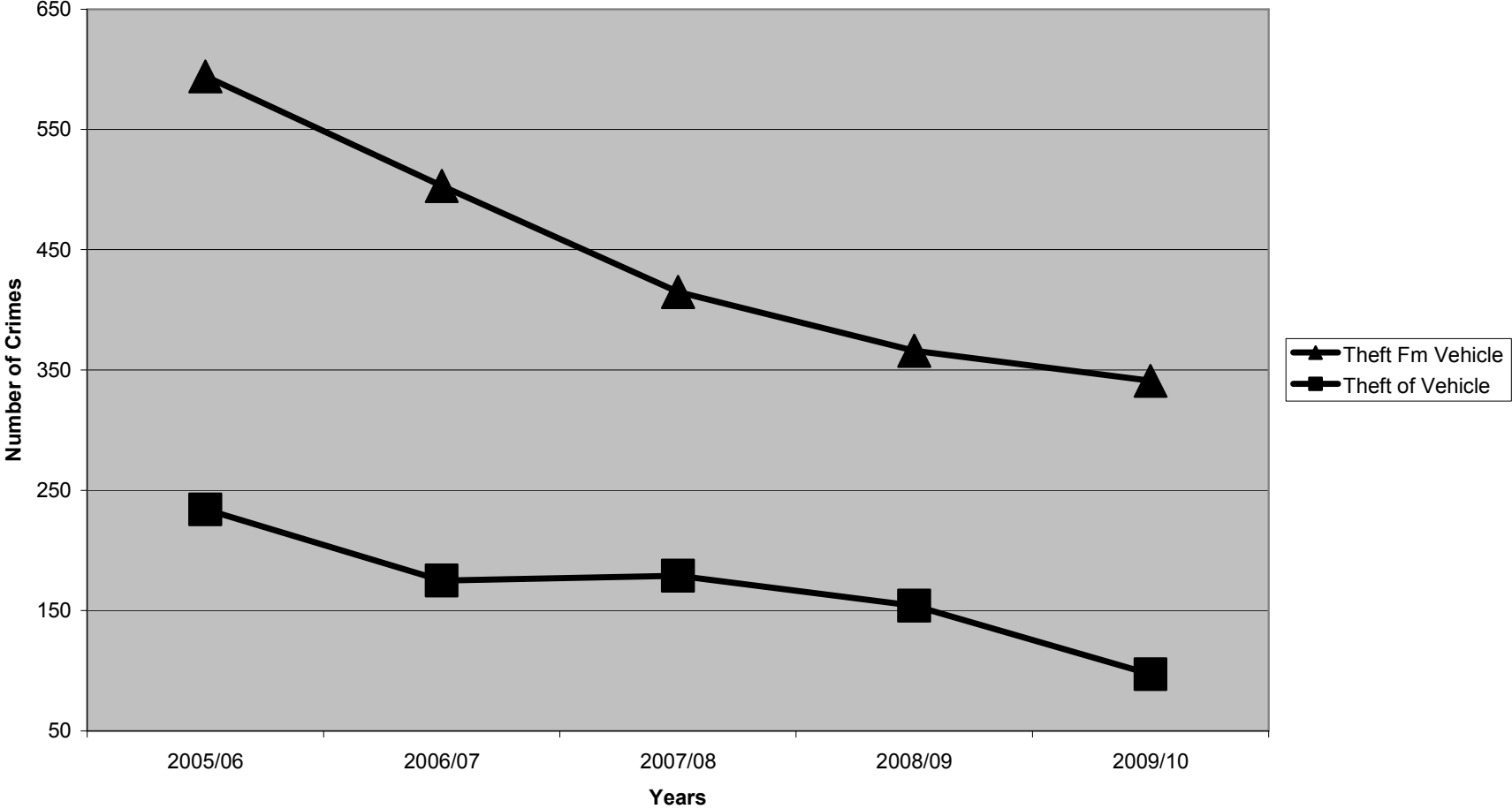


Appendix 3

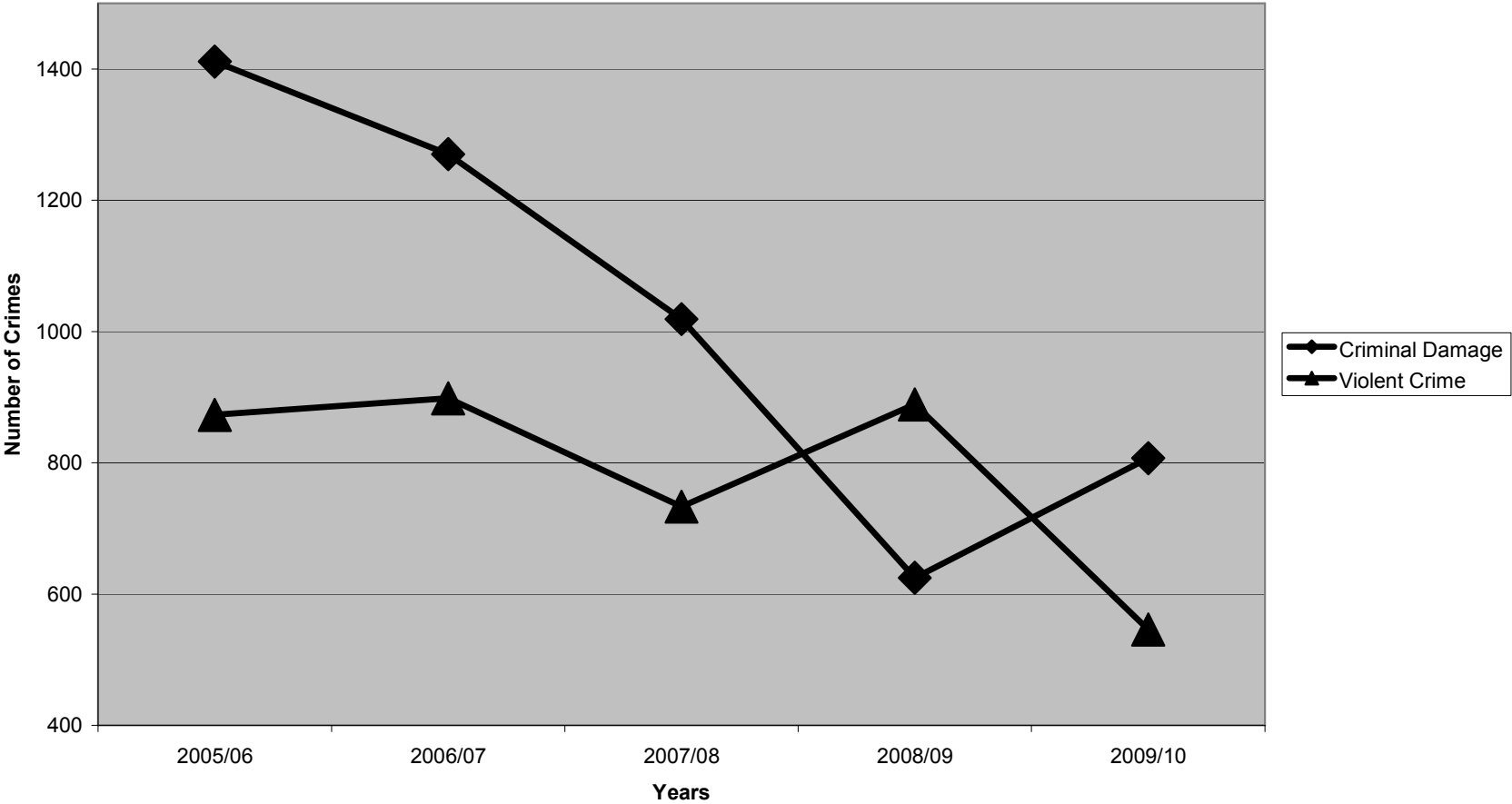
Burglary and Robbery 2005-2010



Vehicle Crime 2005-2010



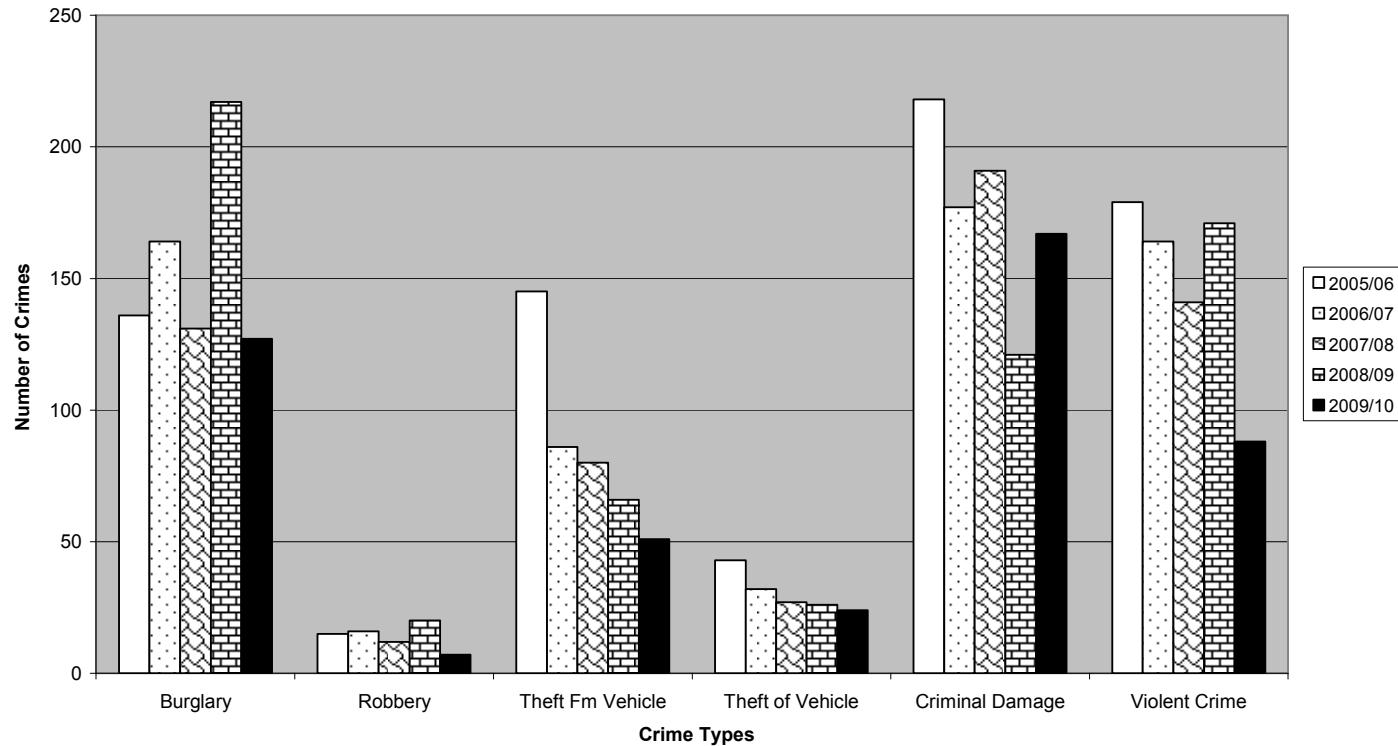
Criminal Damage and Violent Crime



Adel & Wharfedale Ward

Adel & Wharfedale Crime Types	Years					Variation	
	2005/06	2006/07	2007/08	2008/09	2009/10	Difference	Reduction
Burglary	136	164	131	217	127	90	41%
Robbery	15	16	12	20	7	13	65%
Theft Fm Vehicle	145	86	80	66	51	15	23%
Theft of Vehicle	43	32	27	26	24	2	8%
Criminal Damage	218	177	191	121	167	-46	-38%
Violent Crime	179	164	141	171	88	83	49%

Adel & Wharfedale ward

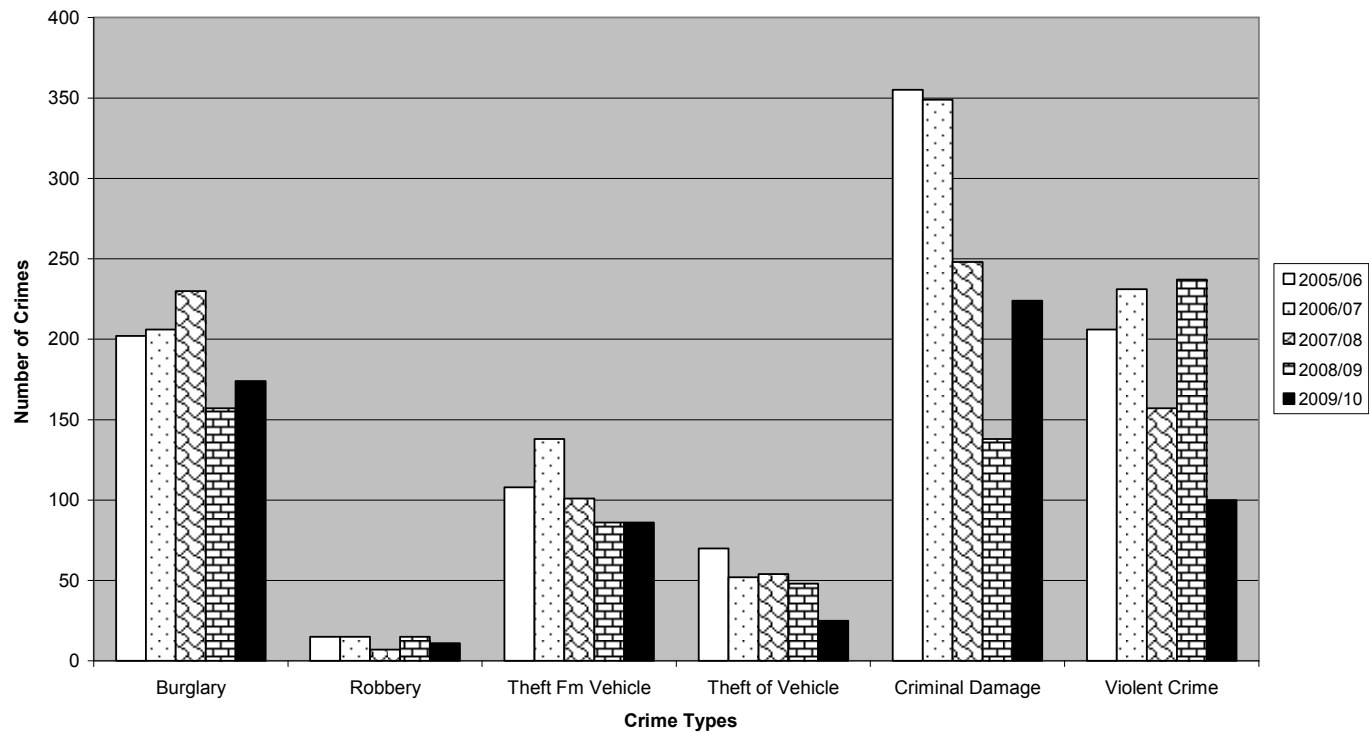


Appendix 7

Horsforth Ward

Guiseley & Rawdon	Years					Variation	
Crime Types	2005/06	2006/07	2007/08	2008/09	2009/10	Difference	Reduction
Burglary	189	180	144	175	136	39	22%
Robbery	6	6	7	5	10	-5	-100%
Theft Fm Vehicle	177	126	132	114	90	24	21%
Theft of Vehicle	45	44	42	40	19	21	53%
Criminal Damage	324	309	255	127	169	-42	-33%
Violent Crime	211	206	166	185	141	44	24%

Horsforth ward

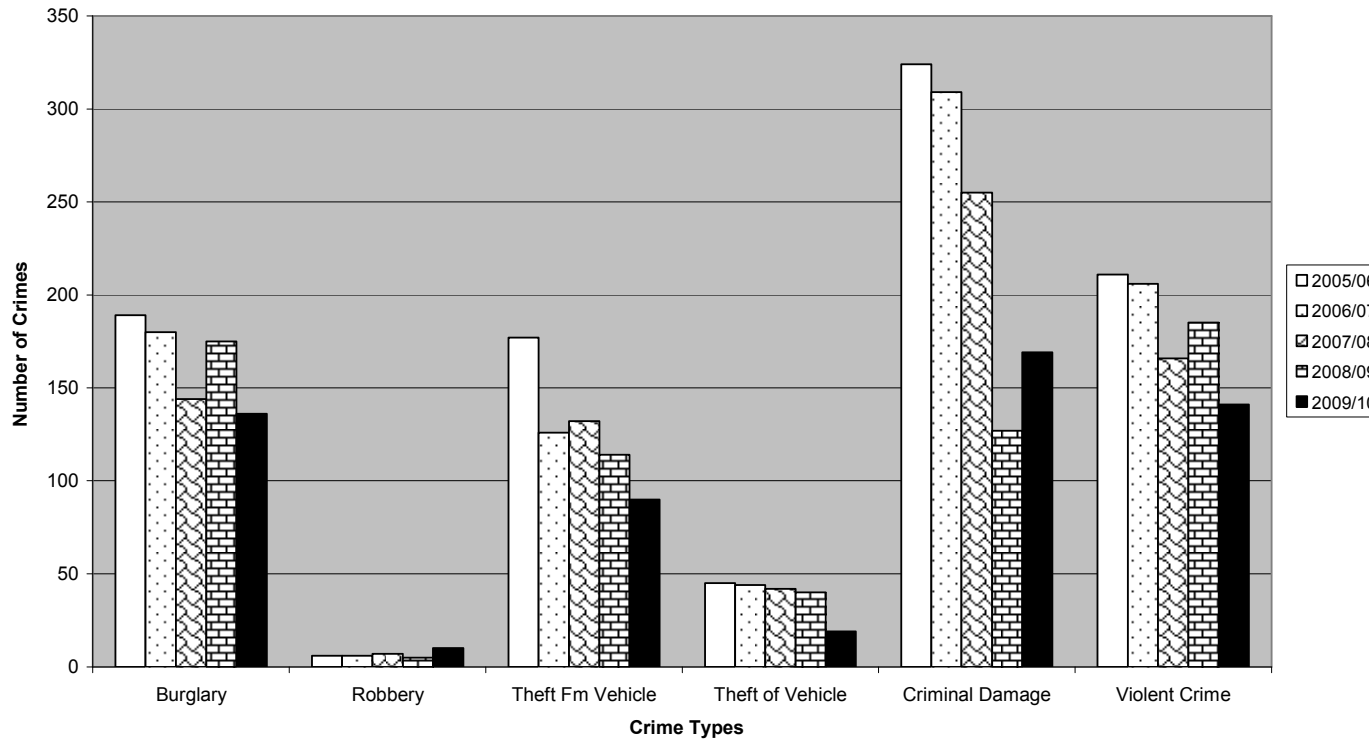


Appendix 8

Guiseley & Rawdon Ward

Horsforth	Years					Variation	
Crime Types	2005/06	2006/07	2007/08	2008/09	2009/10	Difference	Reduction
Burglary	202	206	230	157	174	-17	-11%
Robbery	15	15	7	15	11	4	27%
Theft Fm Vehicle	108	138	101	86	86	0	0%
Theft of Vehicle	70	52	54	48	25	23	48%
Criminal Damage	355	349	248	138	224	-86	-62%
Violent Crime	206	231	157	237	100	137	58%

Guiseley & Rawdon Ward



Otley & Yeadon Ward

Otley & Yeadon	Years					Variation	
Crime Types	2005/06	2006/07	2007/08	2008/09	2009/10	Difference	Reduction
Burglary	152	206	138	101	132	-31	-31%
Robbery	11	15	12	7	5	2	29%
Theft Fm Vehicle	164	153	102	100	114	-14	-14%
Theft of Vehicle	76	47	56	40	29	11	28%
Criminal Damage	514	435	325	239	117	122	51%
Violent Crime	277	297	269	296	217	79	27%

Otley & Yeadon ward

